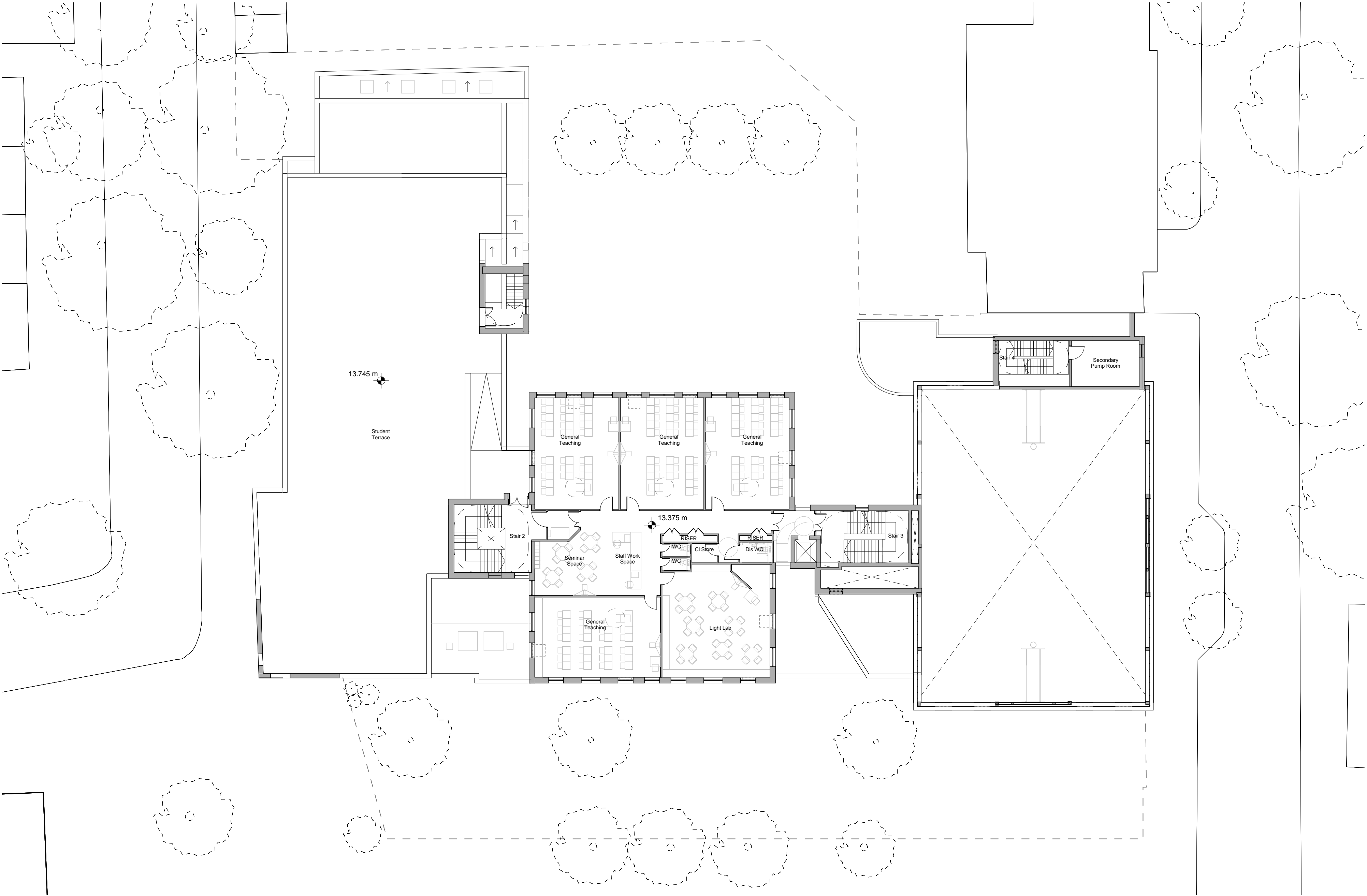
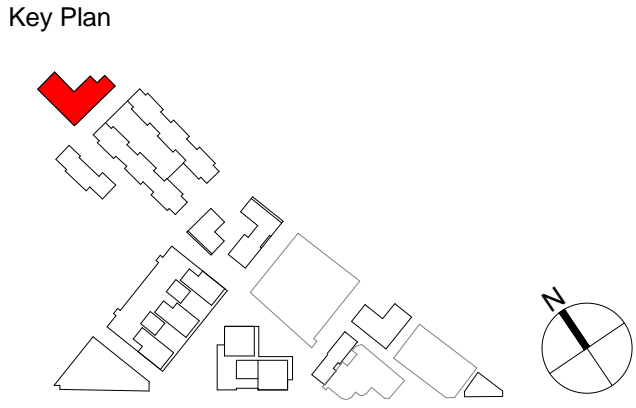


Second Floor Plan



Third Floor Plan

1:200 0 1 5 10 m



REVISIONS		
No.	Revision	Date
A	Addendum	January 2018

COTTRELL & VERMEULEN
ARCHITECTURE

1B Iliffe Street
London
SE17 3LJ
0207 708 2567
Client: Grosvenor Britain & Ireland

2607-CVA-BC01-XX-DR-PLN-A-0102		A
0381: The Bermondsey Project School		
2F/3F Plan as Proposed		
Scale: 1 : 200 @ A1		October 2017
Drawn by: HH		Checked by: RC
Filename: 0381_CURRENT		<small>Do not scale from this drawing Confirm all dimensions on site</small>